

CABLED®

A Revolution in LED Linear Lighting



2020

TUPexelectric



www.tupex.se



CabLED[®]

LED Linear Systems



TUPEX CabLED technology is a patented and an innovative convergence of cable and LED technology with leading edge thermal management and optical evenness to offer a continuous run solution for indoor, outdoor and underwater lighting applications.

- Ultra thin – light and flexible* (2000 series)
- Flame Retardant
- UV Proof
- Innovative Crossover of the Cable and LED Technology
- Seamless & Continuous Length up to 40m
- Optical Evenness and Flexibility
- Leading Edge Heat Management
- Durable and Reliable
- Patented design
- Energy efficient and Eco friendly
- UV and salt water resistant materials
- UL & CE standards certified
- Weather & Waterproof (IP68)
- Easy Cut and Reconnect with Range of Connectors
- Can be cut and reconnect to any length in multiple of 30mm (1.18in) minimum*** (6000 series)

Awards



Spark Pro Bronze Award
by the SparkAwards



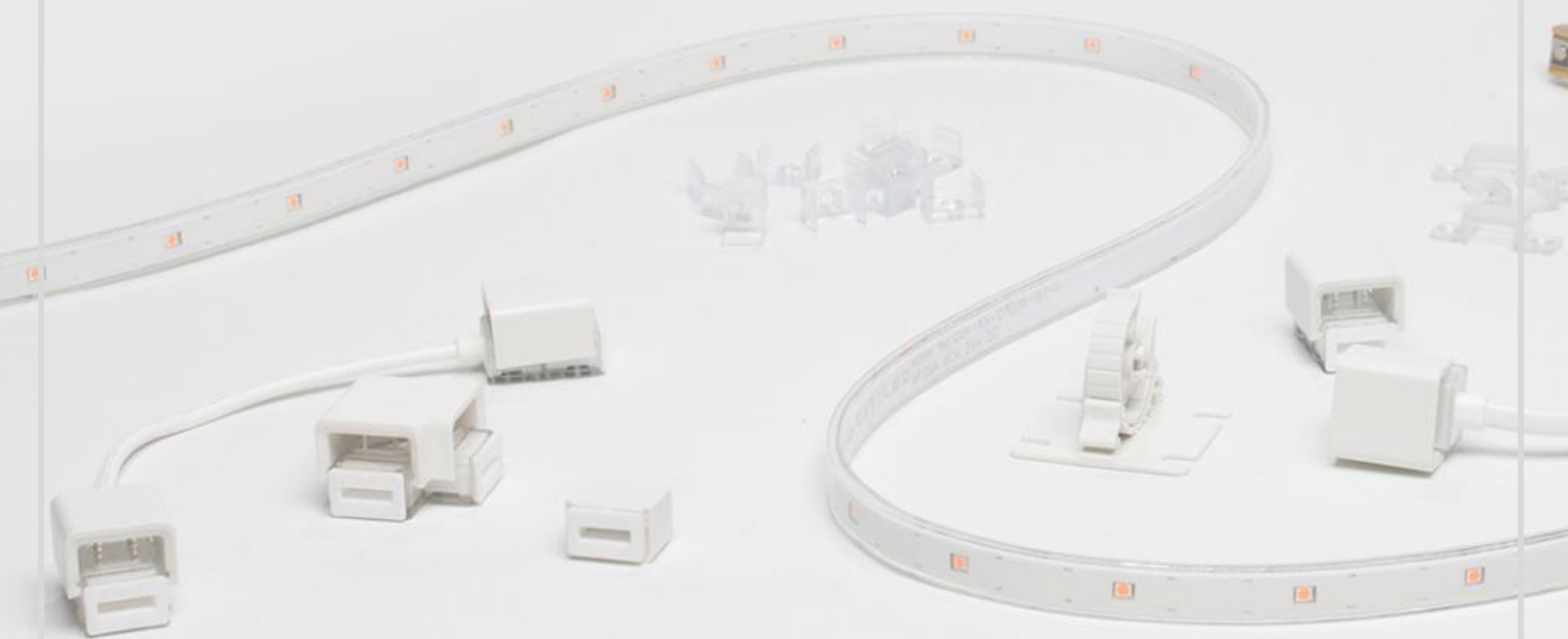
Most Innovative Product Design Award
by Hong Kong Perspective Magazine



創意獎
INNOVATION AND
CREATIVITY AWARD

Innovation And Creativity Award
by Hong Kong Awards For Industries

‘the simplest LED strip solution’



- **CE certification & ErP**

EN60598-1 / EN60598-2 / EN62031 / EN55015 / EN61000

- **UL2388** Listed; and comply to UL2108

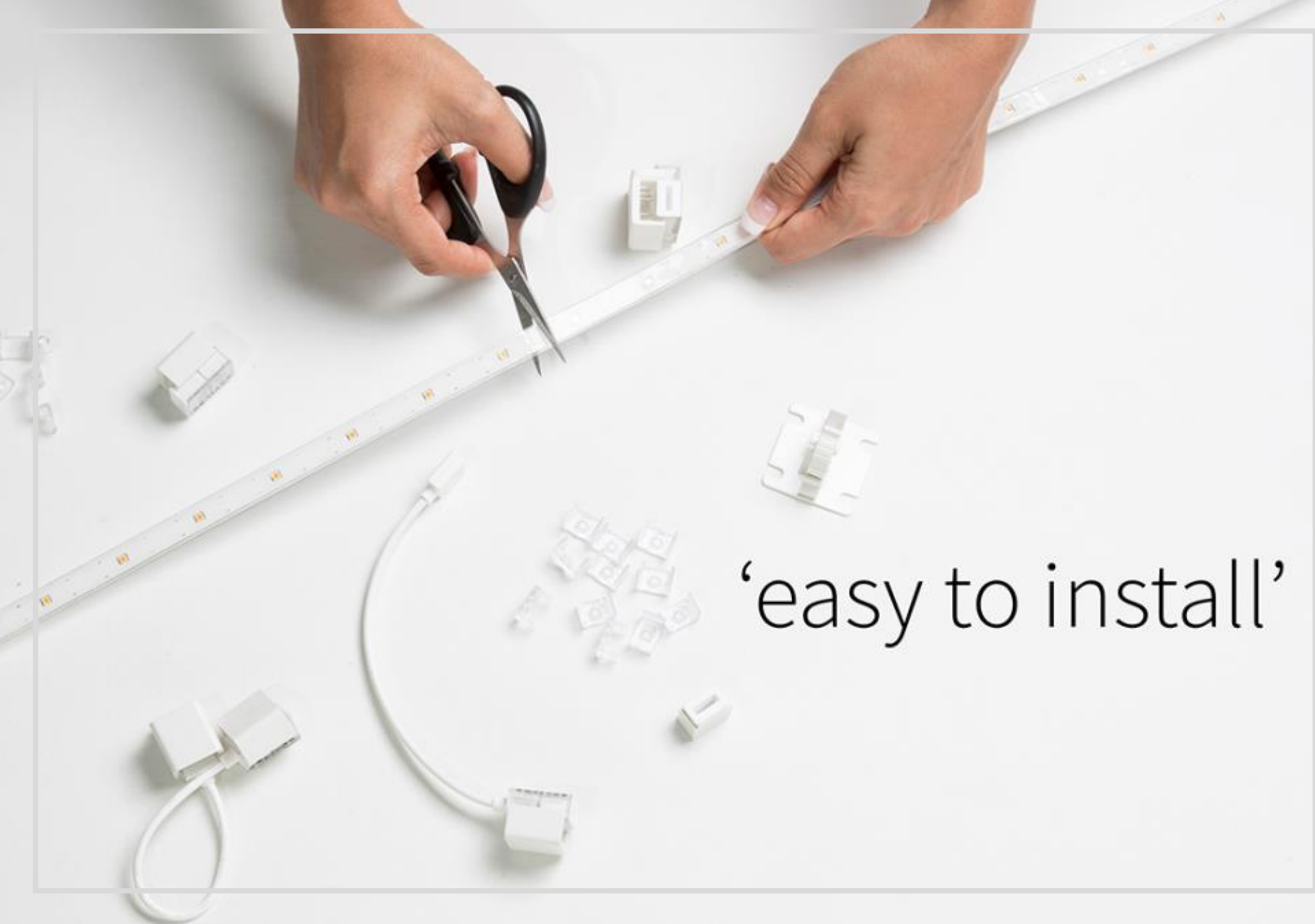
- **UV Test:** Complied to UV ISO 4892-2:2013 Light Ageing Test

- **Flame Retardant:** Material is complied to UL 94 rating and the CableD products fulfill 650 degC Glow Wire Test per IEC

65098-2 standard.

- **IP Test:** IP65 testing according to EN 60598-1

- **Connector** tested according to EN 60598-1



‘easy to install’

From Residential, Commercial to Architectural



cabled[®]

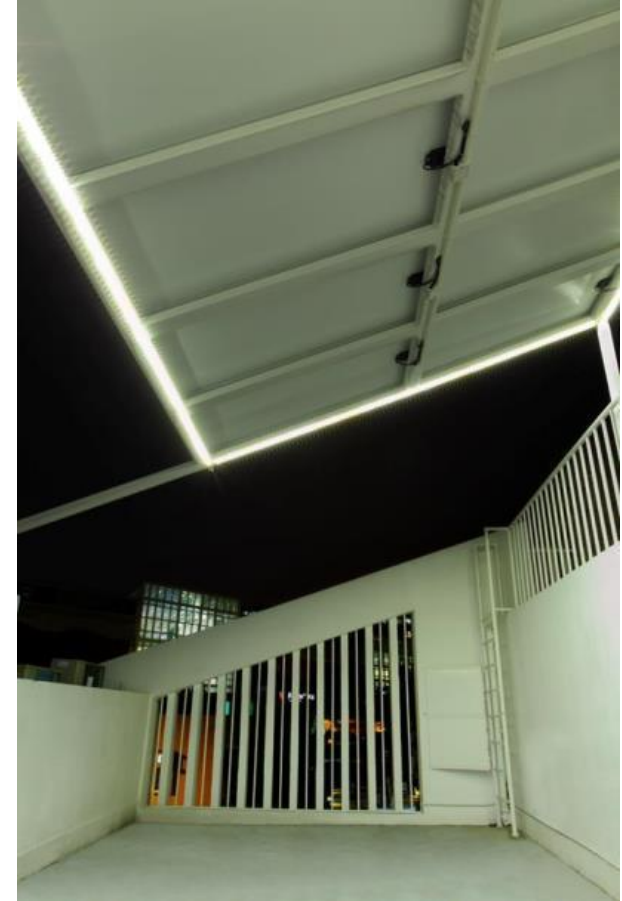
Applications











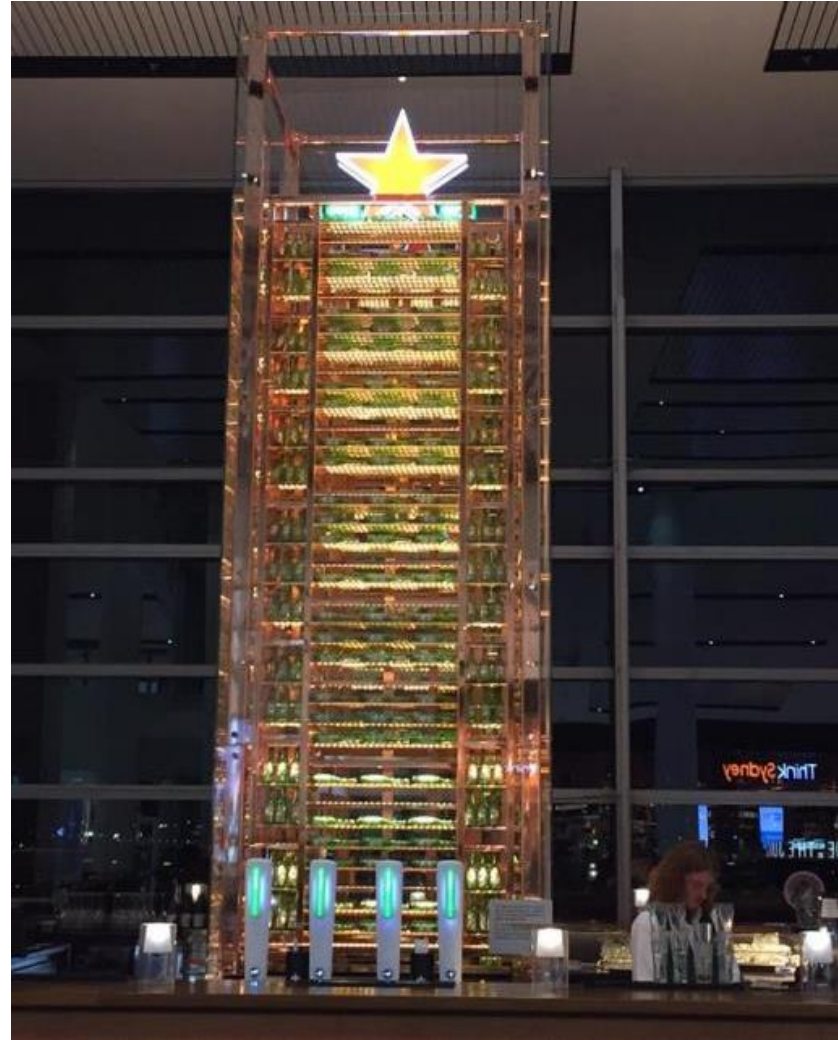






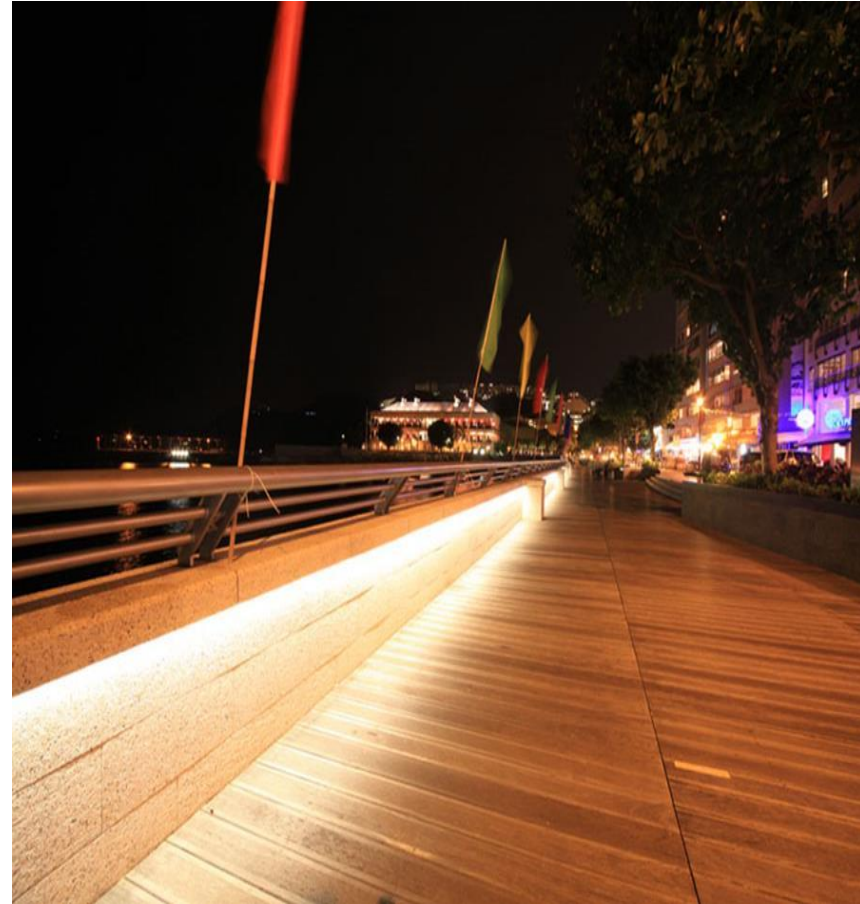


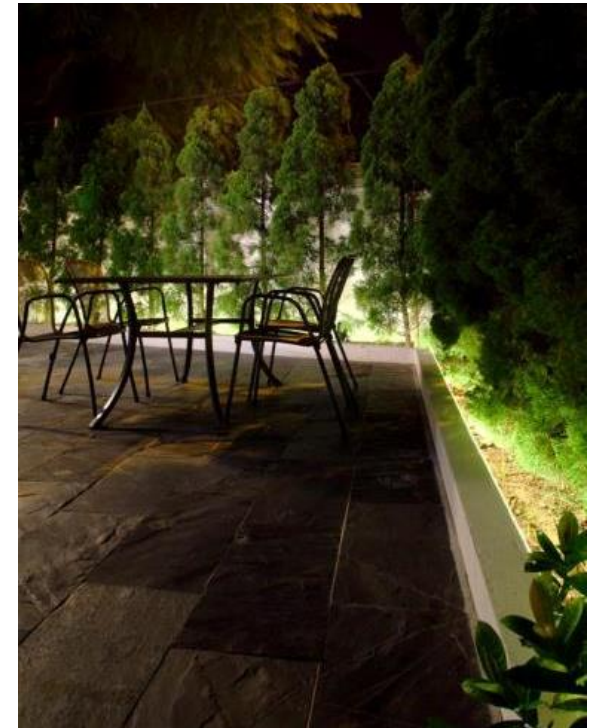




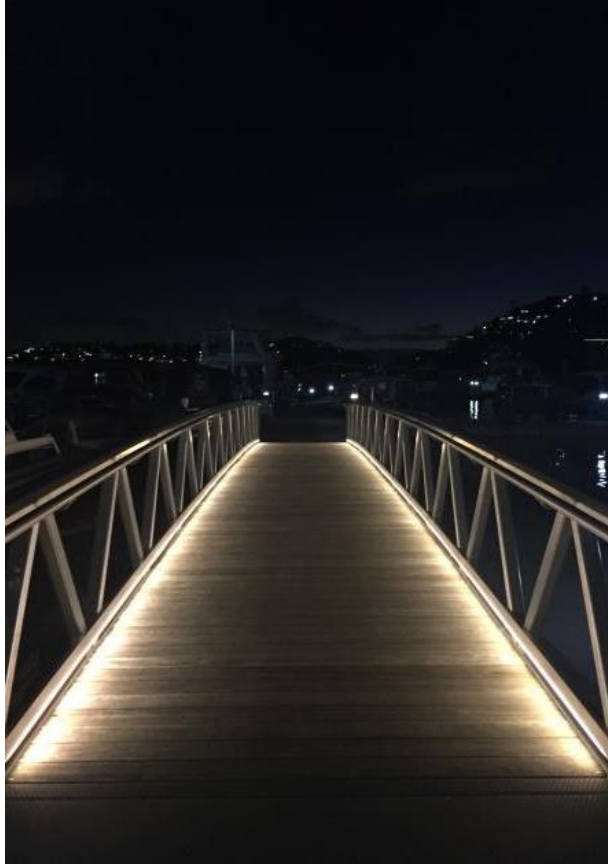


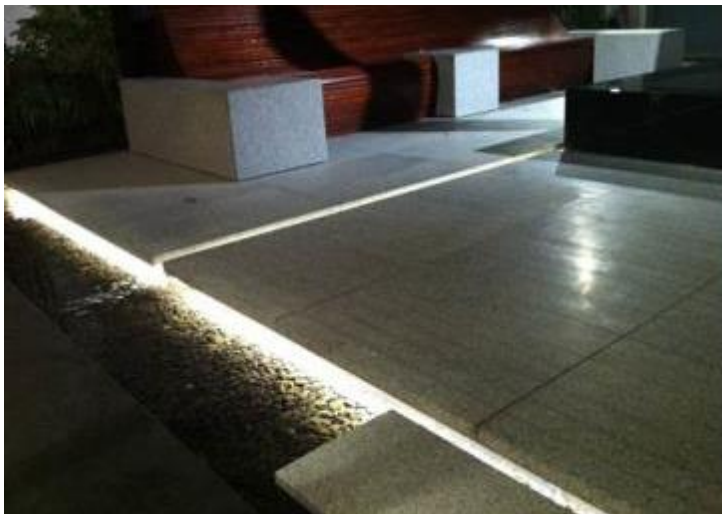


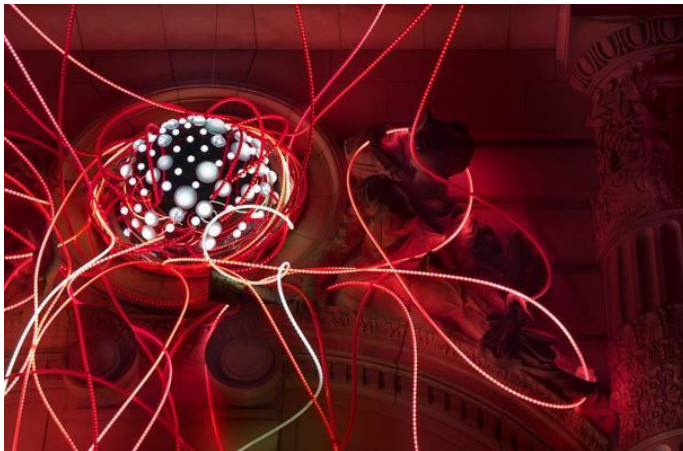
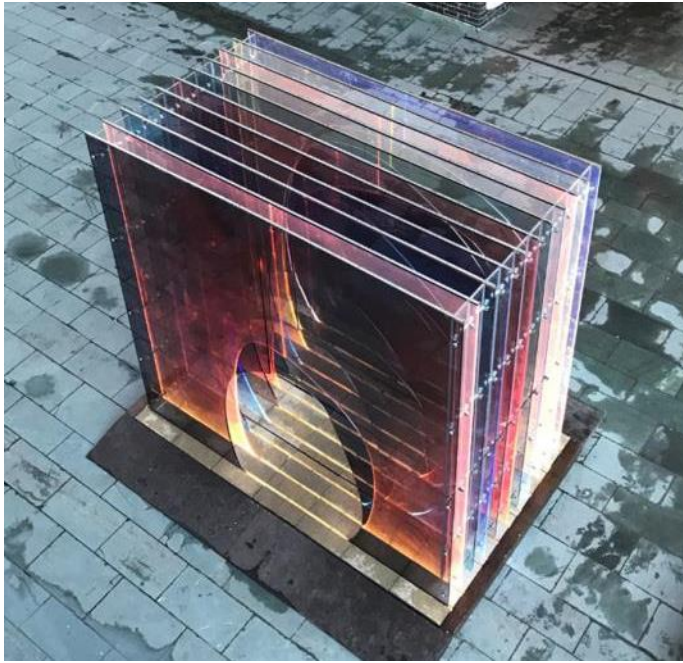














‘accessible
plug & play system’

For both indoor and outdoor applications



Simple installation

Step 1: Cut CABLED® Strip

Cut CABLED®

Cut CABLED® strip to desired length along the cut mark indicated every 180mm / 7inches.



Step 2: Install Connectors

- With the LED side facing up, slide one CABLED® strip into the opening in bottom half of one side of the connector until it reaches the end. Repeat with the other CABLED® strips in the other sides of the connector if required.



The wiring connection of the light chain should be carried out by qualified person. All connectors only use once.

- Make sure all notches and arrow-mark on CABLED® are fully inserted inside the connector.



** Not compatible with 12V LED driver & 12V 16mA CABLED 600 strip



Slide until all notches and arrow mark is fully covered



Angle Channeling

Model : 6000MC Angle Channeling

(Pack of 2)



Adjustable Tilt Mounting

Model : 6000MC Adjustable Tilt Mounting

(Pack of 2)



Flat Channeling

Model : 6000MC Flat Channeling

(Pack of 2)

Mounting

For both indoor and outdoor applications



Channel Bracket



Bridge Bracket



Edge Bracket



Garden Stake



Channeling



1M Aluminum Extrusion



1M AL Extrusion 2-slot channel



Sweden

TUPEX SVERIGE

Bergkällavägen 34, 192 79

Sollentuna, Sweden

Phone: (+46) 8 544 011 11

Fax: (+46) 8 544 011 13

Email: Kundservice@tupex.se

Website: www.tupex.se



www.tupex.se