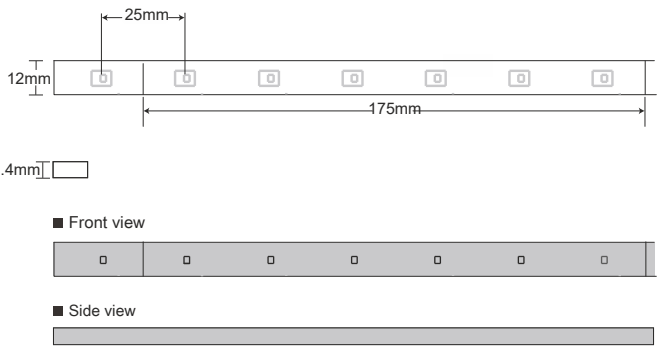
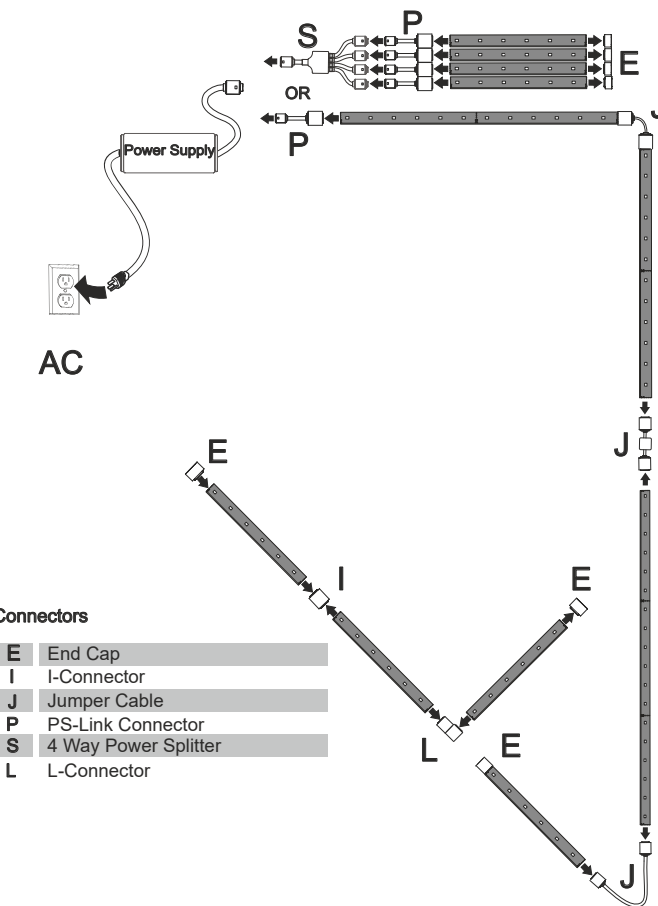


Strip Dimension



Component Layout with IP65 connectors

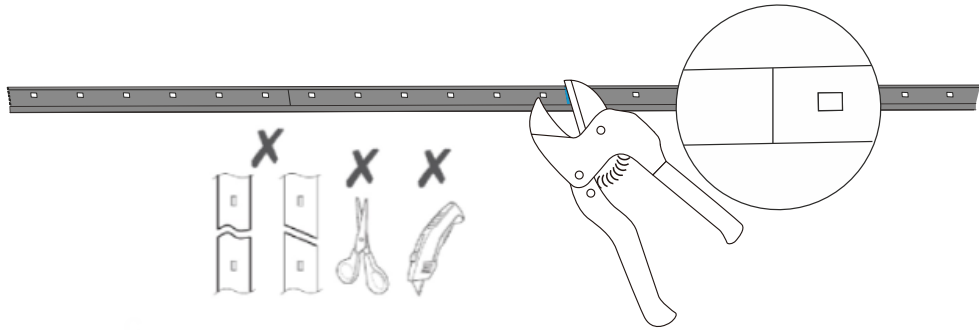
This diagram illustrates possible layouts for the LED STRIP. Refer to the Component Overview for additional information.



Strip Specification

Strip can be cut every 17.5cm.				
STRIP	Warm White (2700K)	Bright White (3000K)	Neutral White (4000K)	Cool White (6500K)
Input Voltage	24V			
Input Current	450mA/m			
Power	8W/m			
Weight	61.5g/m			
Beam Angle	120°			
Lumen/ Meter	750lm	750lm	800lm	800lm
CRI	80			
No. of LED/Segment	7pcs			
LED Pitch	25mm			
IP Rating	IP20,IP65,IP68 depending on connector use			
Operating Temp.	-20° ~ 50°			
StorageTemp.	-25° ~ 60°			
Min. Bending Radius	60mm			
Max. Connection Length	10m			
Dimming	Yes,with inline dimmer			

Cut strip to desired length along the cut mark indicated

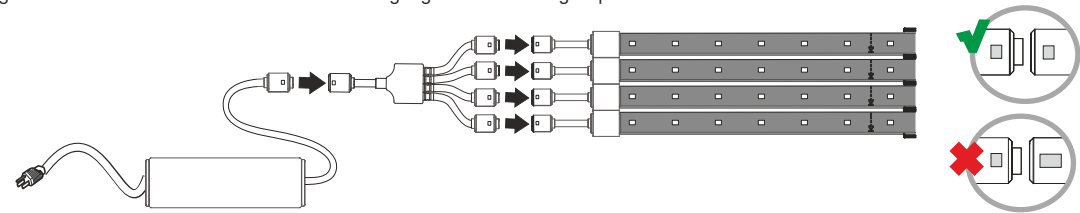


IP 65 Connectors

Model	Description	IP 65
	4 Way Power Splitter	Connects four strips to one power supply. Install between power supply and four PS-Link connectors.
	PS-Link Connector	Used in ALL installations. Connects strip to power supply.
	I-Connector	Connects two lengths of strips in a straight line. Use to extend a length of strip.
	Jumper Cable	Connects two strips.
	L-Connector	Connects two strips.
	End Cap	Used in ALL installations. Protects end of strip that is not connected to a connector.

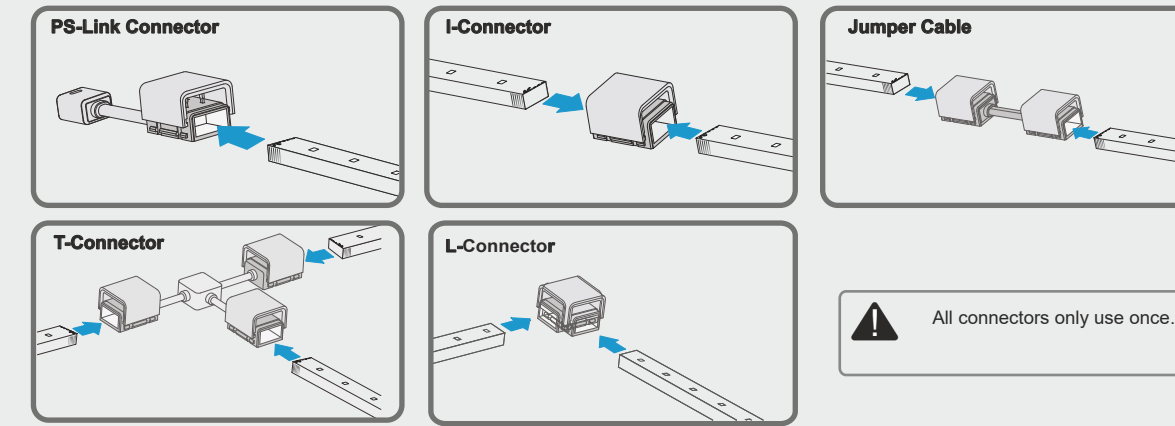
Install 4 Way Power Splitter

Match the icons on each PS-Link Connector with the icons on the 4 Way Power Splitter. Repeat the same connection method with the power supply and the 4 Way Splitter. Ordnen Sie die Symbole auf jedem PS-Link-Anschluss den Symbolen auf dem 4-fach-Leistungsteiler zu. Wiederholen Sie die gleiche Anschlussmethode mit der Stromversorgung. und den 4-Wege-Splitter.

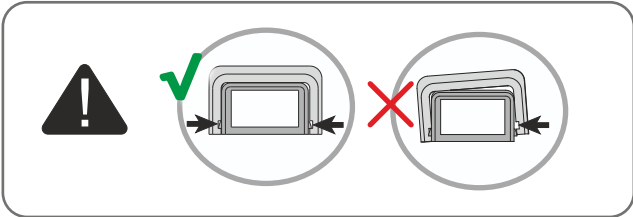
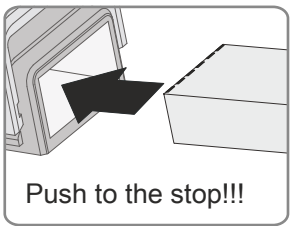


Install Connectors

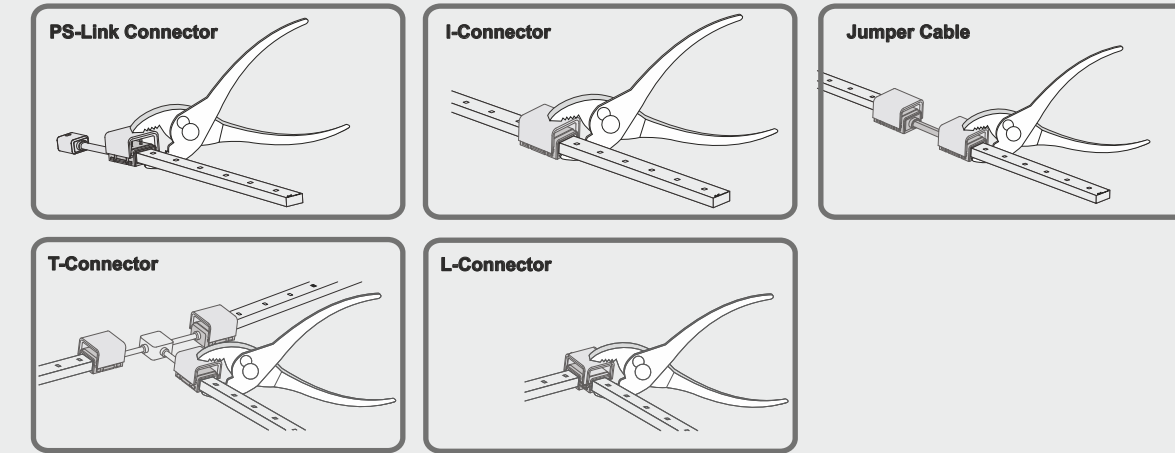
A With the LED side facing up, slide one strip into the opening in bottom half of one side of the connector until it reaches the end. Repeat with the other strips in the other sides of the connector if required.



B Push the strip completely into the connector.

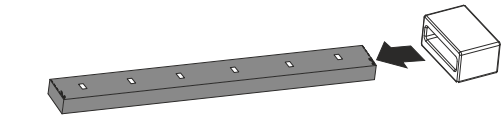


C Using pliers, apply even pressure to the bottom and top halves of the connector to push connector together, securing strip inside.

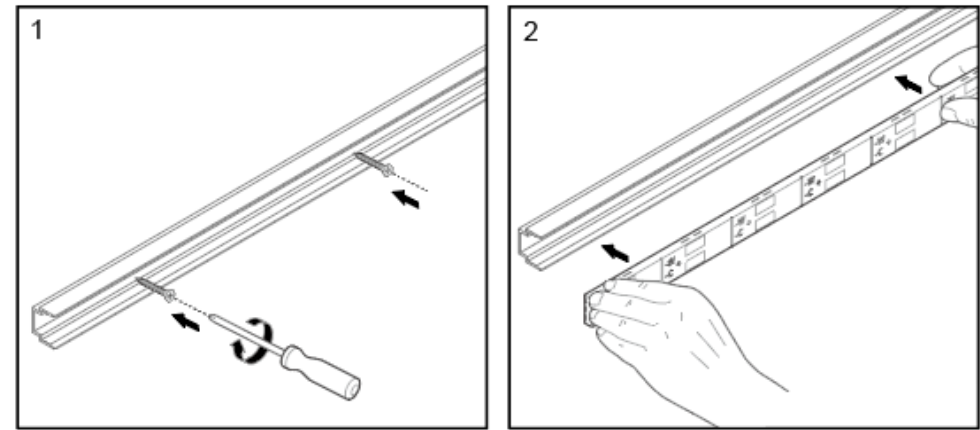
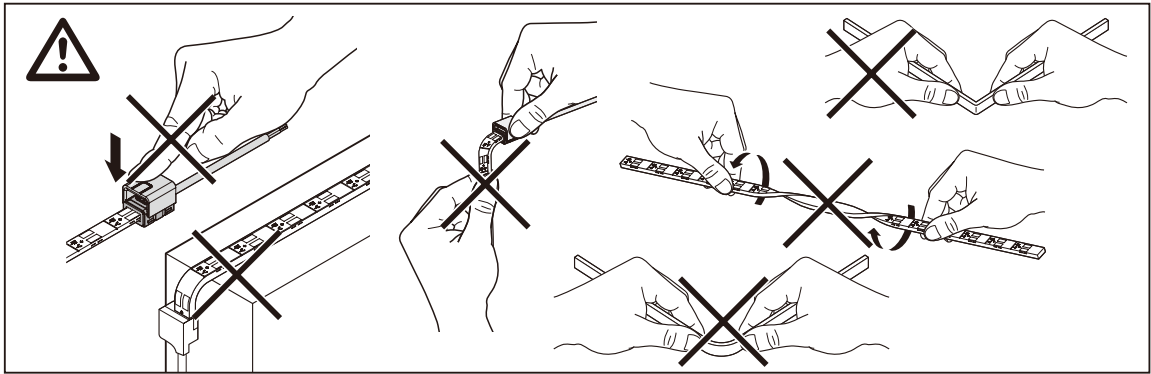


Install End Cap

Slide End Cap onto strip that will have no connector. The End Cap protects the strip.

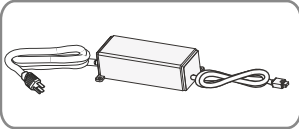


Mounting Options



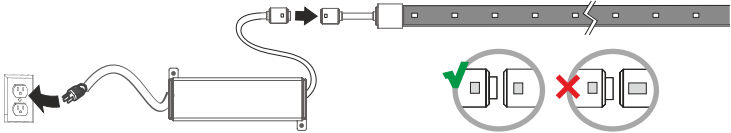
Power Supply

Select the correct power supply, determine the length of strip needed.

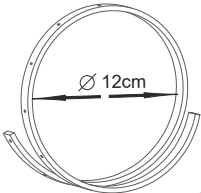


Recommended Power Supply	Recommended Length of Strip
	8W
15 Watt 24VDC	≤1,75M / 5.74 Ft
18 Watt 24VDC	≤2M / 6.56 Ft
30 Watt 24VDC	≤3.6M / 11.8Ft
60 Watt 24VDC	≤7.5M / 24.6Ft

Matching the icons, connect the PS-Link connector to the power supply. Plug the power supply into the AC outlet



- IMPORTANT: The 2000 system is designed to work ONLY with the power supplies, connectors, mounting options, and accessories listed. Do NOT substitute other products as they may damage your system.
- IMPORTANT: Do not plug into outlet until power supply is secured. Place power supply near outlet and off the ground so there is no chance of it being submerged in water.
- IMPORTANT: Risk of fire and electric shock.
- IMPORTANT: The connectors consist of two parts, a top and bottom, which are partially assembled at the factory. DO NOT push the connectors together before you are ready to install.
- IMPORTANT: The strip may ONLY be cut every 25cm, indicated by a cut line on the LED side of the strip. When you are measuring for your installation, if the total length in inches is not a multiple of 7, then adjust the plan of your layout to use the nearest cut line marked on the strip.
- IMPORTANT: When using pliers that do not cover the entire surface of the connector, hold the connector and strip steady so the strip remains in position. Carefully rotate the pliers and apply pressure to each side of the connector, pushing the top and bottom together.
- IMPORTANT: There is only one way to connect the 4 Way Power Splitter to the power supply and PS-Link Connectors. Make certain the icons match before connecting. Connect the 4 Way Power Splitter to the PSLink Connectors and to the power supply BEFORE plugging the power supply into the AC outlet.
- IMPORTANT: There is only one way to connect the PS-Link Connector to the power supply. Make certain the icons match before connecting. Connect the power supply to the PS-Link Connector BEFORE plugging the power supply into the AC outlet.
- IMPORTANT: Use Garden Stakes where strip will be installed on the ground outside. Install so strip or connectors will NOT be submerged in water.
- IMPORTANT: Do not coil the strip into a tight circle with a diameter less than 12cm.
- IMPORTANT: The light source of this luminaire is not replaceable; when the light source reaches its end of life the whole luminaire shall be replaced.



ELECTRICAL RATING
To avoid any malfunctions of the system, and to protect against electrical shock, fire or physical injury, please observe the following:
This system has been designed to work with 100-240 volt AC current. Connection to a line voltage other than that may create a safety and fire hazard and may damage the system. If you are unsure of the type of power supply to your home, consult your local power company or a qualified service technician.

GROUNDING INSTRUCTIONS
This product must be grounded. If it should malfunction or breakdown, grounding provides a path of least resistance for electric current to reduce the risk of electric shock. This product is equipped with a grd having an equipment-grounding conductor and a grounding plug. The plug must be plugged into an appropriate outlet that is properly installed and grounded in accordance with all local codes and ordinances.
WARNING – Improper connection of the equipment-grounding conductor is able to result in a risk of electric shock. Check with a qualified electrician or serviceman if you are in doubt as to whether the product is properly grounded. Do not modify the plug provided with the product - If it will not fit the outlet, have a proper outlet installed by a qualified electrician.
Ground Fault Circuit Interrupter (GFCI) protection should be provided on the circuits or outlet to be used for the outdoor use flexible lighting product. Receptacles are available with built-in GFCI protection for this measure of safety. If you are unsure of the type of outlet, consult a qualified service technician to install a GFCI receptacle.

POWER SOURCE
Do not modify the plug provided with the product – If it will not fit the outlet, have a proper outlet installed by a qualified electrician.
Damaged or deformed power cords are hazardous and should be replaced immediately by a qualified service technician.

OPERATION
Do not operate with the flexible light tightly coiled.
Do not puncture, cut, shorten, or splice the flexible lighting.
Unplug the unit and the AC power adapter from the electrical outlet during electrical storms or when unused for long periods of time to prevent damage.
For outdoor use units, make sure that all connections and the end cap in the last segment are tightly secured to preclude the entry of water.
Do not exceed the recommended length of strip listed for each power supply.
Do not look directly into the LED lights when lit. They are powerful and could damage your vision.
The light source of this luminaire is not replaceable; when the light source reaches its end of life the whole luminaire shall be replaced.

LOCATION
Place power supply well above the ground or in an area they will NOT be submerged in water or other liquids.
Therstrip and components are rated IP65, weather proof only. Do not submerge the flexible lighting in liquids, or use the product in the vicinity of standing water or other liquids.
Keep all components away from extreme heat sources such as heating vents, radiators, electric heaters and fire pits.
Do not cover this product as the covering may cause the flexible light to overheat and melt or ignite.
Do not submerge the flexible light in liquids, or use the product in the vicinity of standing water or other liquids.
Do not route the cord or flexible lighting through walls, doors, windows or any like part of the building structure.
Place strip so it will not shine directly into people's eyes.

INSTALLATION
Safety measures must be observed at all times during the installation of this product. Use proper safety gear and tools during the installation process to prevent physical injury. Products should be installed in accordance with the user manual, current electrical codes and/or the current National Electric Code (NEC). Improper installation may cause a possible shock or fire hazard.
To avoid electrical shock and/or damage the system, do not handle the components with wet hands.
Always make sure the strip is disconnected from the power source before cutting, connecting, mounting or modifying in any way. Do NOT dismantle the strip itself.
Do not coil the strip into a tight circle with a diameter less than 12cm or bend it in half as it may damage the LEDs embedded in the strip.
Do not subject the flexible strip to continuous flexing.
Do not use if there is any damage to the light or cord insulation. Inspect periodically.
connectors have sharp pins inside. Follow instructions when handling.
Use onlyconnectors, mountings and power supply. Carefully follow the instructions to install and mount.
Secure this flexible strip using only the hangers or clips provided. Do not secure this product or its cord with staples, nails, or like means that may damage the insulation.

CLEANING
Clean only with a dry or slightly damp cloth. Do not use any acid or alkaline liquids, cleansing agents or solvents. Unplug the system from the wall outlet before cleaning.

NON-USE PERIODS
When left unused for long periods of time, the system should be unplugged from the AC outlet.

SERVICE
Always remove the AC power adapter from the electrical outlet before adjusting or inspecting the system. Inspect your system periodically.
Do not open, dismantle or attempt to repair the strip or the bottom half of the connectors. There are no user-serviceable parts.
Do not open the cabinets of accessories or power supply. There are no user-serviceable parts. Opening the cabinets may present a shock hazard, and any modification to the product will void your warranty.
Do not attempt to service the components yourself. If water or any metal objects such as paper clips, wire or staples accidentally fall inside, then disconnect from the power source immediately and consult an authorized service center.

*Technical data are based on optimum conditions and actual performance may vary.
Warranty : Please contact local RZB office or distributors for more information.

TUBEX SVERIGE
Bergkallavagen 34 192 79
Sollentuna Sweden
Telefon: +46 8 544 011 11
E-mail: kundservice@tupex.se

