

Daylight Sensor	
4	-
-	disable
ON	30lux

Daylight sensor:

The sensor can be set to only allow the lamp to illuminate below a defined ambient brightness threshold. When set to Disable mode, the daylight sensor will switch on the lamp when motion is detected regardless of ambient light level.

Notice 1: The light threshold can be selected through the slide switch, it may cause a large deviation in different lamps.

Stand-by DIM Level	
5	
-	100%
ON	50%

Stand-by dimming level:

This is the dimmed low light output level you would like to have after the hold-time in the absence of people.

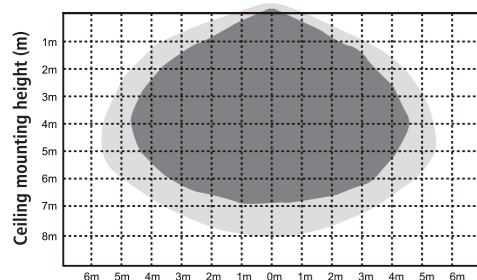
Detection Area	
6	
-	∞
ON	15min

Stand-by period:

This is the time period you would like to keep at the low light output level before it is completely switched off in the long absence of people.

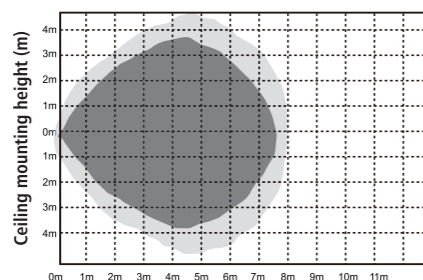
Induction Range

Ceiling Mounting pattern(Unit: m)



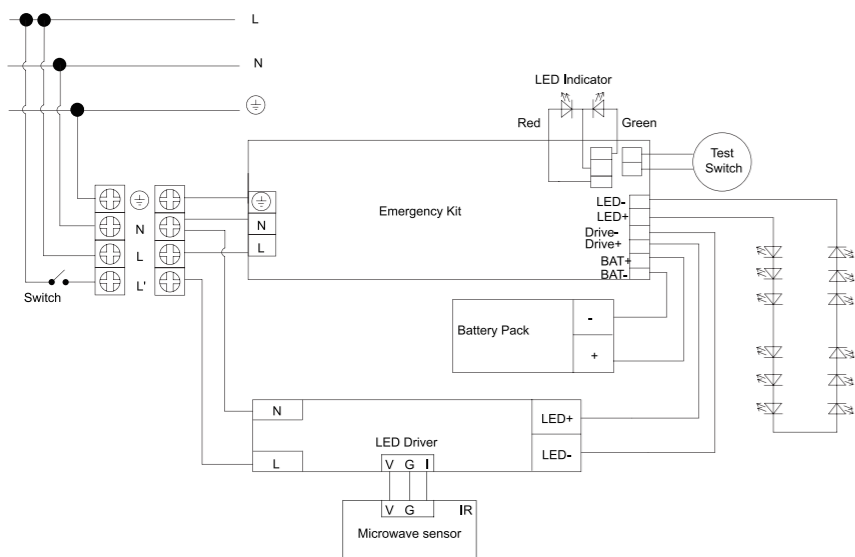
■ High detection area ■ Low detection area

Wall Mounting pattern(Unit: m)



■ High detection area ■ Low detection area

Wiring Diagram



Instructions for automatic test option

1. Once the unit is powered up it will automatically initiate a self test and diagnostics as follows:

- Every 4seconds: Check for battery disconnection, charger board fault, lamp failure and transformer failure.
 - Every month: Perform a 3minute duration test.
 - Every year: Perform a 1 Hour or 3 Hours duration test.
- All test functions are factory preset and do not need field adjustment.

2. Dual Colour Indicator LED Status Meanings

- Green Solid On Ready/Normal Operation
- Red Requires Service

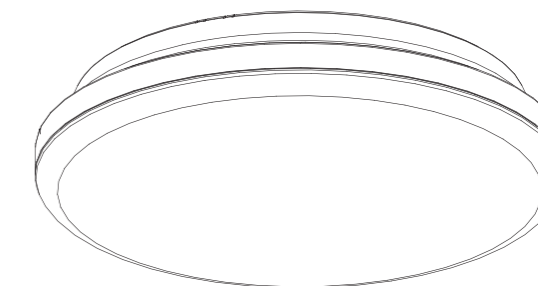
•	One flash, 4 second pause	Battery not connected
• •	Two flashes, 4 second pause	Low battery voltage
• • •	Three flashes, 4 second pause	Charger board fault
• • • •	Four flashes, 4 second pause	Transformer fault
• • • • •	Five flashes, 4 second pause	LED lamp fault

NOTE: After repairing a service fault, press and hold the test button for 2 seconds to reset the flashing indicator light to green.

3. Manual Test

Press test button once	30 second duration test
Press test button twice within 2 seconds	3 minute duration test
Press test button 3 times within 2 seconds	30 minutes duration test
Press test button 4 times within 2 seconds	1 or 3 hours duration test

TUPEX LUNA MULTI 275 LED



LED CEILING LIGHT

TUPExelectric

www.tupex.se

kundservice@tupex.se

+46 8 544 011 11

Important Safety Instructions

To ensure correct function and safety, please read and follow all instructions carefully before using the product:

1. Turn off power supply before installation or before doing any maintenance work.
2. Do not install any luminaire near the heat source.
3. IP grade please refer to product label, only IP65 can be used in damp locations.
4. Do not exceed the nominal supply voltage or amperage ratings.
5. Dimmable version could be compatible with a wide range of recommended TRIAC dimmers.
6. All wiring and installation of the light fitting must adhere to local and national wiring rules.
7. Take care not to pull any electrical wires during unpacking as this may damage the connection.
8. Lay out all the components on a smooth surface and make sure there are no components missing before assembling.
9. To avoid injury or damage to the fitting, please ensure that power leads and screws are secure before connecting the power.
10. Please keep instructions for future reference.

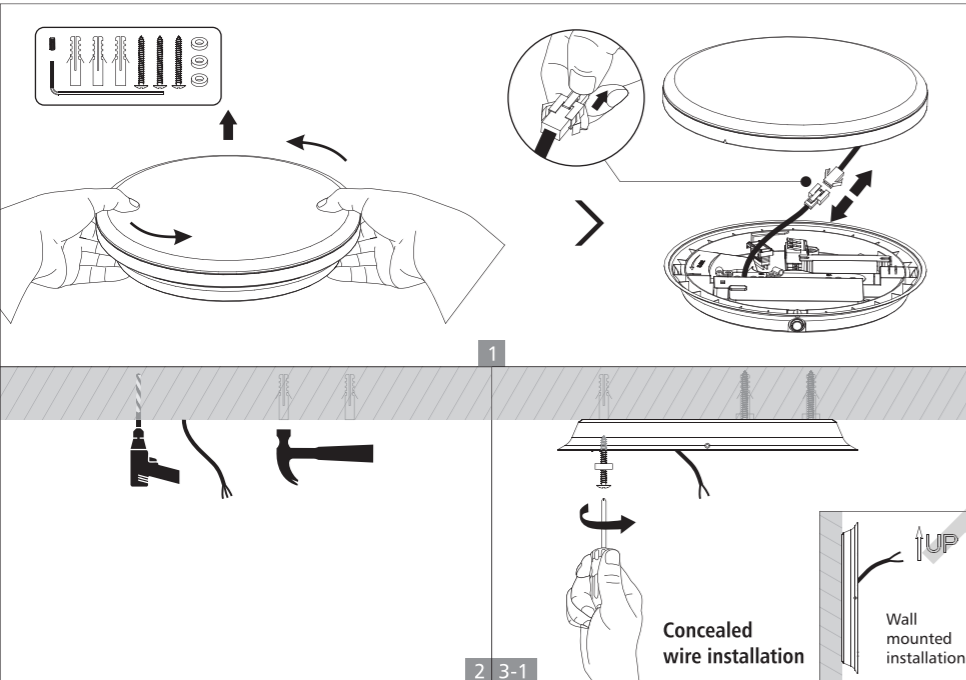
Installation Instruction

WARNING

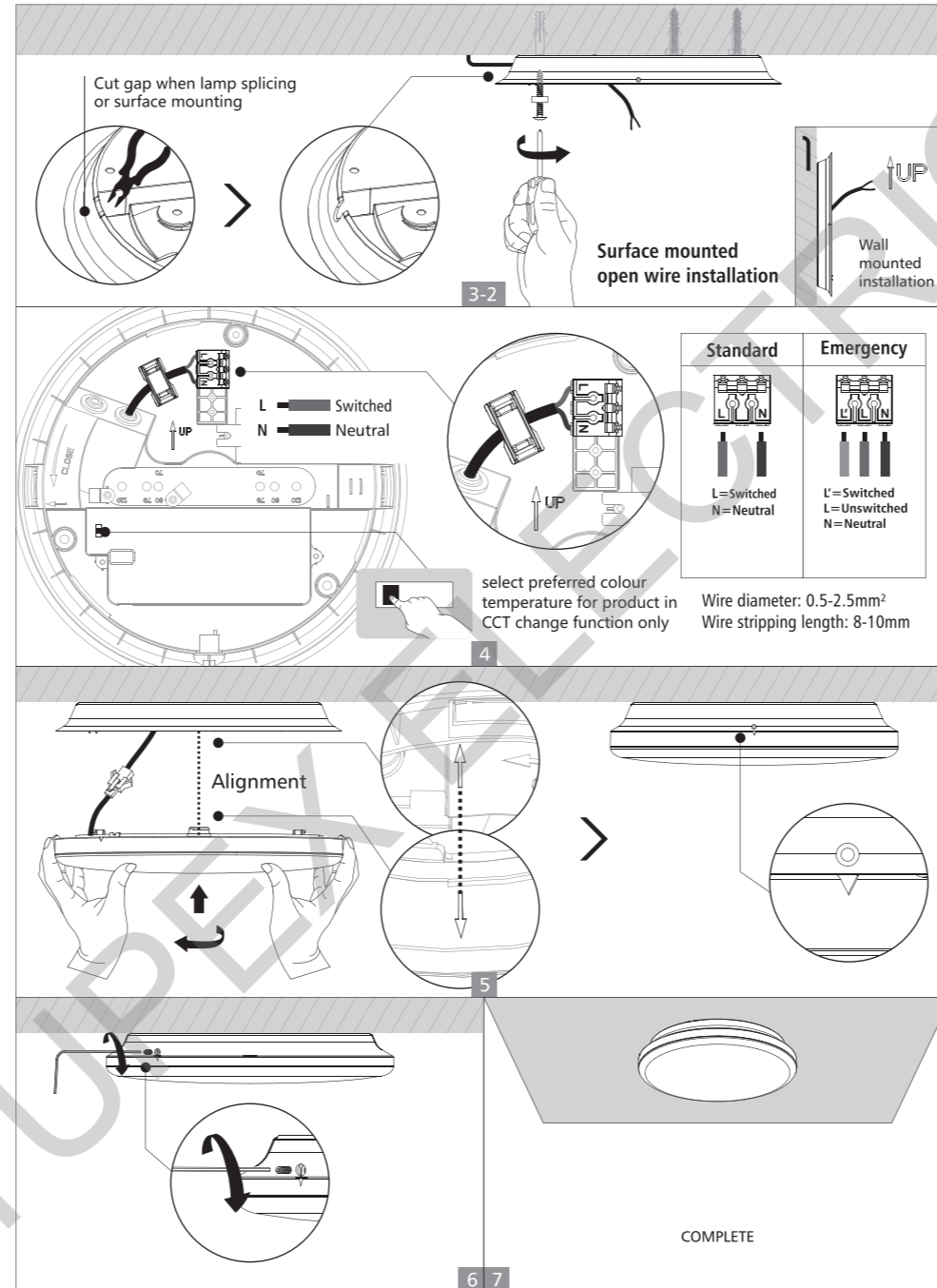
1. Switch off before installation.
2. Switch on only after complete installation and examination of the circuit.
3. Professional electrician for installation and maintenance only.



Surface mounted installation



1



2

Functions Instruction (For specific function, please refer to actual model)



Emergency

Emergency function switches automatically between power cut and power restoration.

- Li battery, high efficiency
- Battery duration: 3 hours
- Charge period: 24 hours



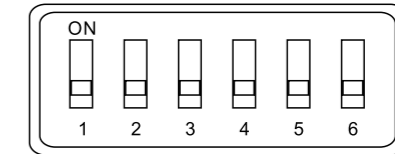
Sensor

Detection area: 140 degree wide detectable beam angle with 4-6 meters distance.

Daylight & Microwave Sensor

Detection Area	Hold Time	Daylight Sensor	Stand-by DIM Level	Stand-by Period
1	2 3	4	5	6
- 100%	- - 5S	- disable	- 0%	- ∞
ON 50%	ON 60S	ON 30lux	ON 20%	ON 15min
	ON - 3min			
	ON ON 10min			

Factory setting



Sensor Setting

Detection area:

Detection area can be reduced by selecting the combination on the DIP switches to fit precisely each application. Notice 1: The test is based on a height of 3m, the radius is the ground detect distance, which can be selected through the slide switch.

Notice 2: The detectable range is measured by human body whose stature is around 1.6-1.7M with medium size and traveling speed is around 1.0-1.5M per second. If the stature, bodily form and traveling speed are changed, then the detectable range will be changed accordingly.

Notice 3: Test result will be highly influenced by test environment, the more open environment, the closer detect distance; the narrower environment, the longer detect distance. The detector may do self-excitation in a narrow environment.

Detection Area	
1	-
-	100%
ON	50%

Hold Time	
2	3
-	-
-	5S
-	ON 60S
ON	- 3min
ON	ON 10min

Hold time:

Refers to the time period the lamp remains at 100% illumination after no motion detected.

Notice 1: The hold time can be selected by the slide switch.

The hold time counting should be started after the sensor is powered on and initialized.

3